



**PARACUBER**  
REVOLUTIONARY CHUTE STORAGE

 **BANAIR**



# PARACUBER REVOLUTIONARY CHUTE STORAGE



## STACKABLE

Custom steel lugs engage with bottom feet. Stack 3 high.



## MOVEABLE

Compatible with all major forklift manufacturers and types



## DURABLE

Designed tough for demanding workplace environments.



## NO BOLTS REQUIRED



## SPACE SAVING

Optimize your available warehouse cube: eliminate stored air. BANAIR.



## RECONFIGURABLE

All BANAIR systems are designed to adapt to suit your changing mission.



## LIFETIME WARRANTY

Protecting your investment with our stamp of quality



## DEPLOYABLE

Ship 15 modules in a 20ft container  
Ship 30 modules in a 40ft HC



## READINESS

Organize stock securely ready for fast deployment

# PARACUBER™

REVOLUTIONARY CHUTE STORAGE

Facilitates bulk storage, optimized logistics and access control for parachutes, meeting the demands of the modern military

The **PARACUBER** protects all chutes within a lockable weather protected and snag-free cube, with chutes protected in ideal storage conditions, ready to operate, and all contained within a hot-dip galvanized stackable steel pallet framework.

Stackable with **3000lbs** per crate, up to 3 crates high, the **PARACUBER** offers revolutionary parachute storage and logistics for modern military requirements.

DEPLOYABLE



HEAVY DUTY



FORKLIFT OPERABLE



NO BOLTS ASSEMBLY



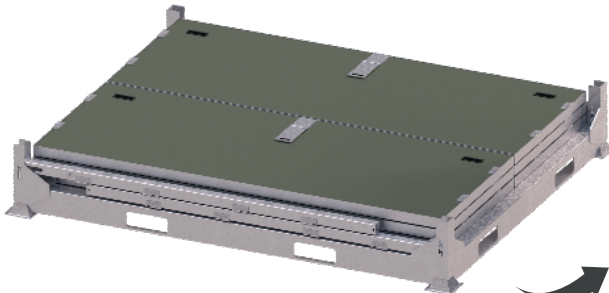
## Construction:

**PALLET & FRAMEWORK:** Hot dip galvanized

## PANELS:

Inner - pre-galvanized steel

Outer - Aluminium polyester powder-coated olive green for added durability



- Overall empty weight - **1100lbs (510kgs)**
- Each panel - **70lbs (32kgs)**
- Weight capacity per module - **3000lbs (1360kgs)**

- Optimized shipping when empty, collapsing by over 80% in volume, with 10 minutes max assembly to fold out ready for use when required.

- Ship **15 modules** in a 20ft container, **30 modules** in a 40ft HC, for efficient transportation and internal logistics.



Capacity:

T11 chutes, QTY 60  
MC6 chutes, QTY 16 (min)

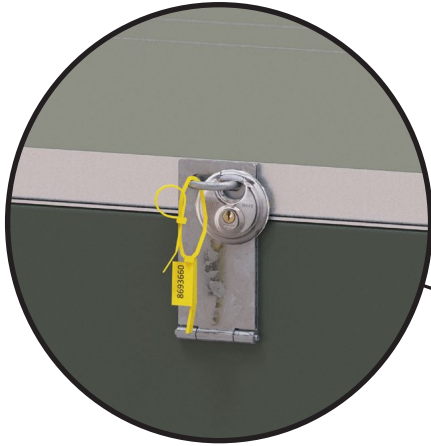


# PARACUBER

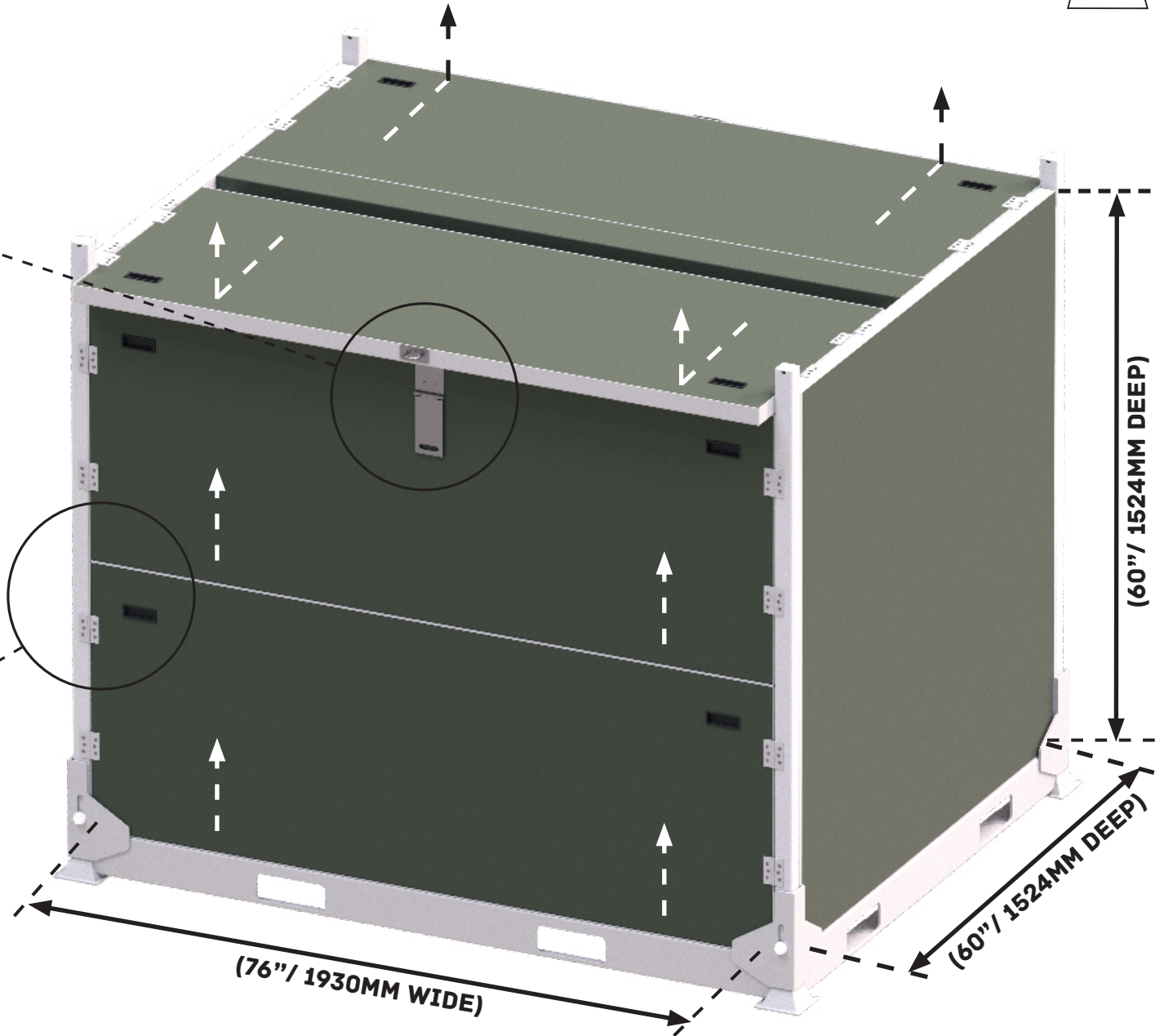
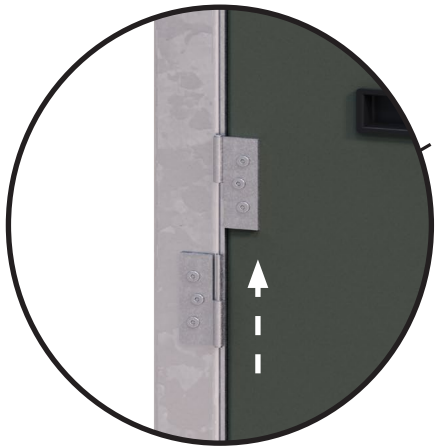
REVOLUTIONARY CHUTE STORAGE

With the **PARACUBER** from **BAN-AIR**, chutes get protected from environmental factors such as dirt, damp, rain, sun and UV, as well as offering much greater protection for the parachutes themselves, including zero sharp edges or snagging possibility.

**3000LBS (1360KGS) CAPACITY**



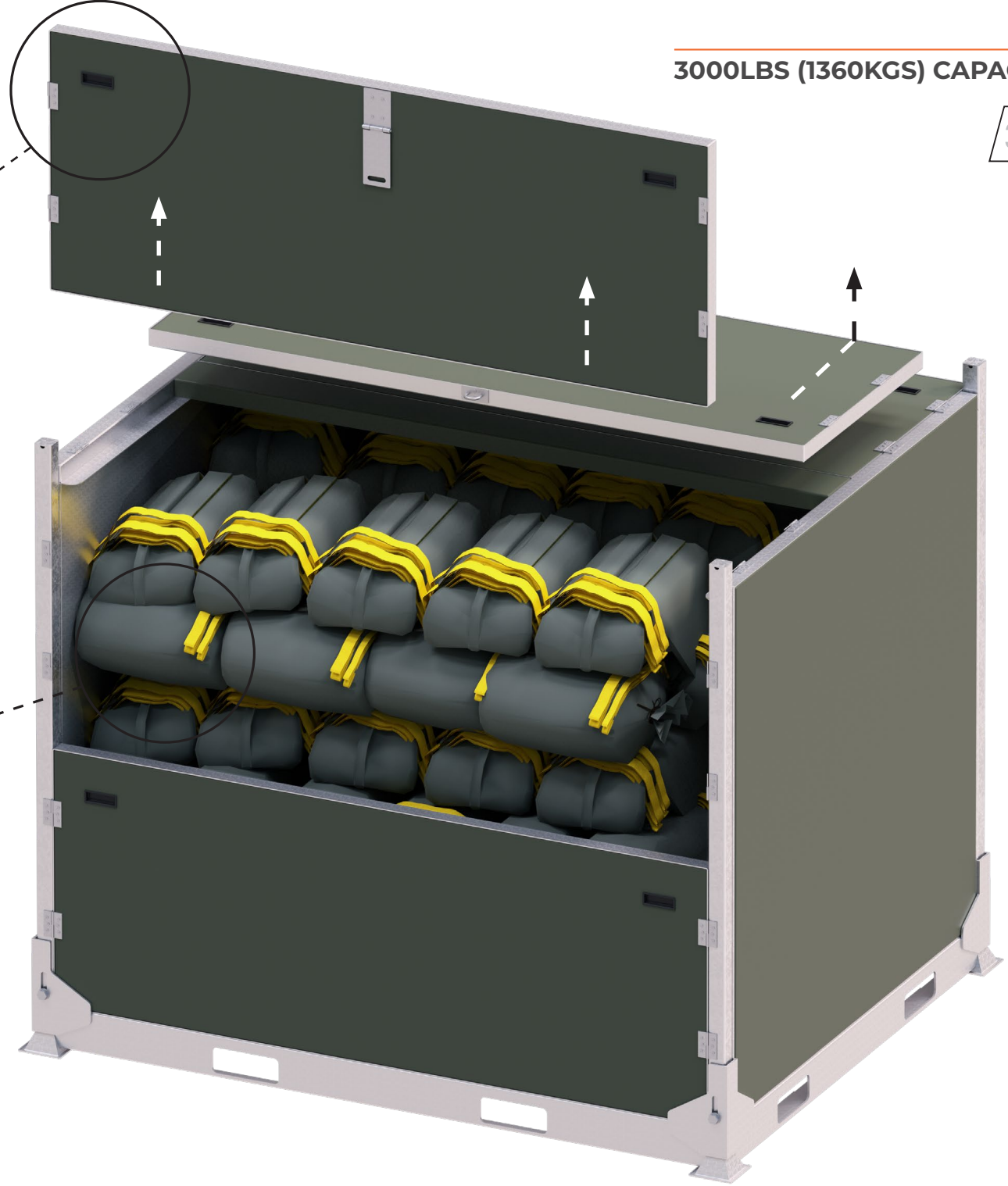
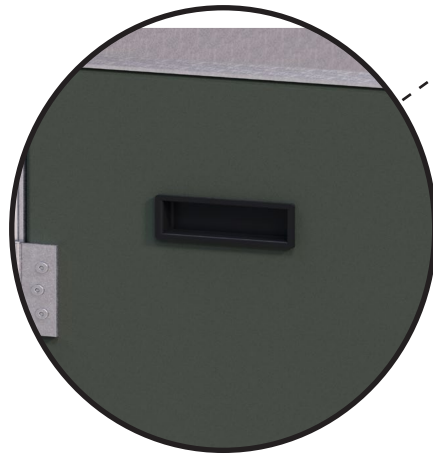
Added to this the PARACUBER has the ability to **security seal** chutes once packed, with a design offering immediate visibility in case of any tampering or sabotage, along with document control space to identify contents.



# PARACUBER

REVOLUTIONARY CHUTE STORAGE

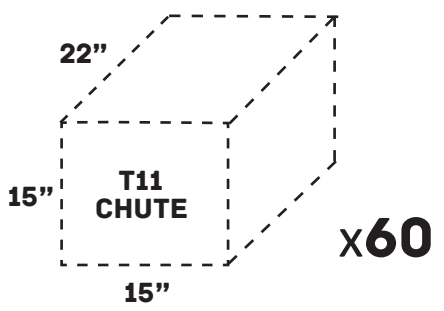
3000LBS (1360KGS) CAPACITY



Recessed handles (x2 per panel) for lifting  
Each panel 70lbs (32kgs) for 2 man lift

Capacity:  
**T11 chutes, QTY 60**  
**MC6 chutes, QTY 16 (min)**

Overall internal size 76" x 60" x 58" (LWH) suitable  
for a variety of general parachute requirements



# PARACUBER

REVOLUTIONARY CHUTE STORAGE

RAPID  
ASSEMBLY



NO BOLTS



## Construction:

**PALLET & FRAMEWORK:** Hot dip galvanized

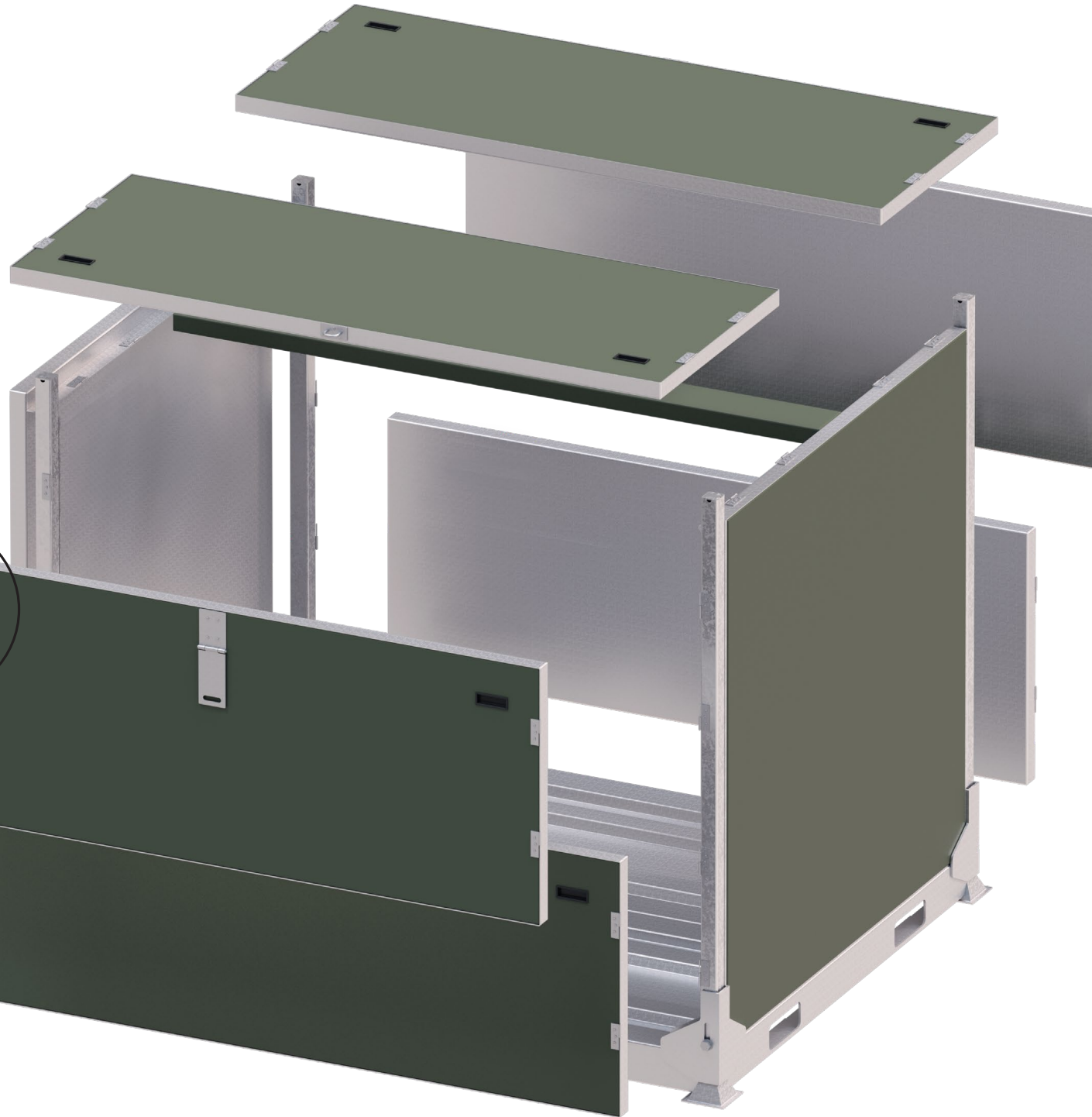
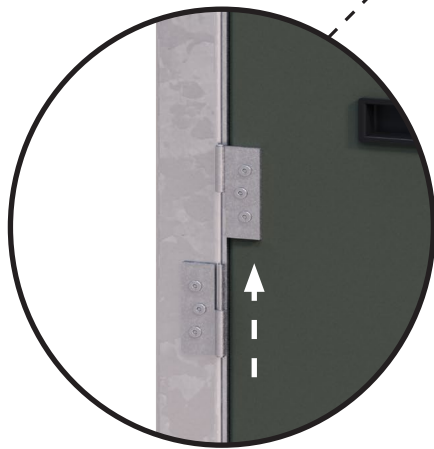
## PANELS:

Inner - pre-galvanized steel

Outer - Aluminium polyester powder-coated  
olive green for added durability

6 removable panels allowing access  
from Front / Back / Top

Recessed handles (x2 per panel)  
- Each panel 70lbs (32kgs) for 2 man lift



# PARACUBER

REVOLUTIONARY CHUTE STORAGE

6 removable panels allowing access from Front / Back / Top



FRONT ACCESS



REAR ACCESS



TOP ACCESS



FULL ACCESS

NO BOLTS



RAPID ASSEMBLY



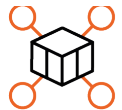
HEAVY DUTY



FORKLIFT OPERABLE



DEPLOYABLE



READINESS



COST EFFECTIVE



# PARACUBER

REVOLUTIONARY CHUTE STORAGE

RAPID  
ASSEMBLY



NO BOLTS



HEAVY DUTY



FORKLIFT  
OPERABLE



DEPLOYABLE



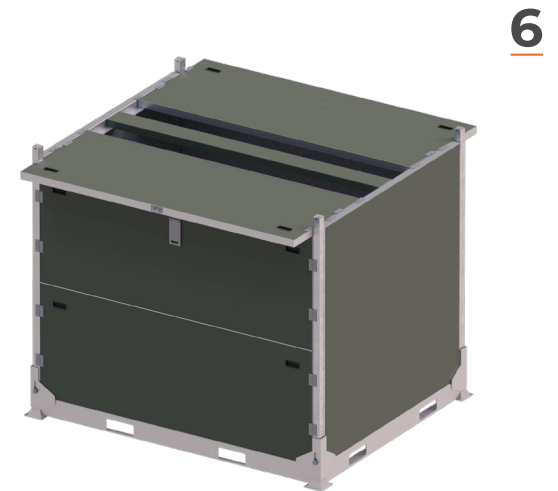
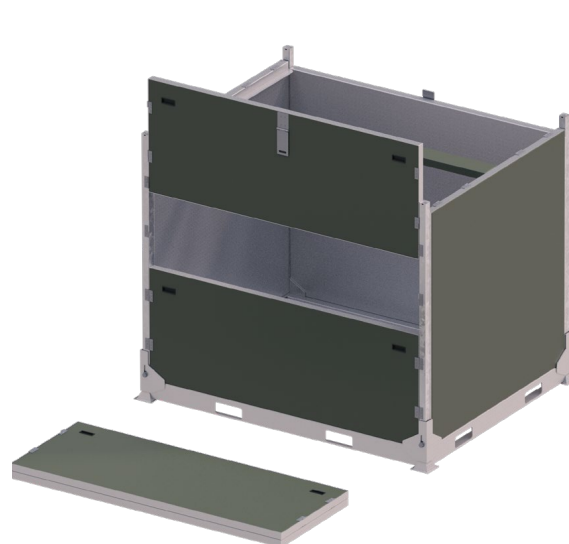
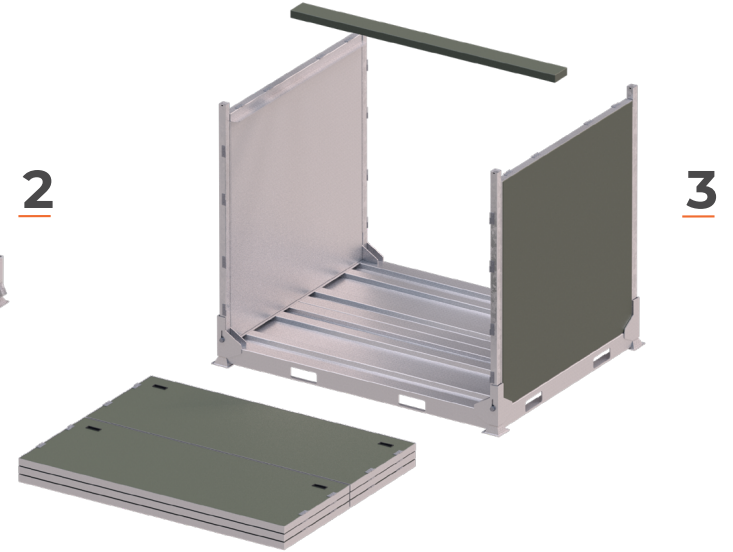
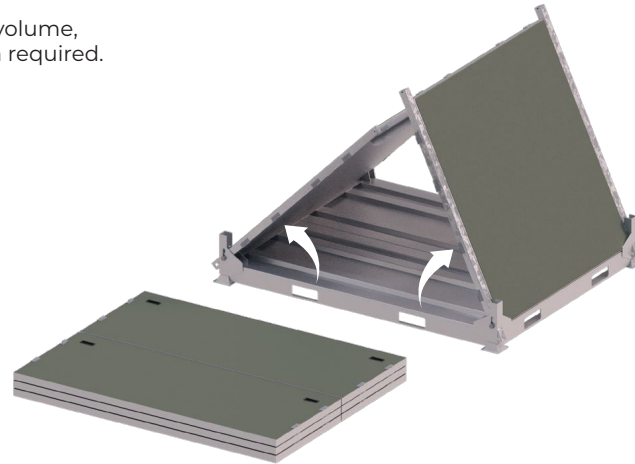
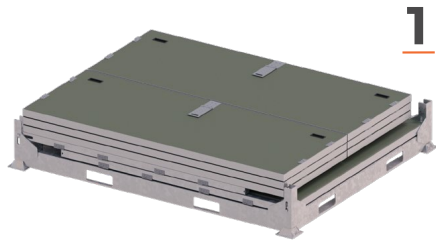
READINESS



COST EFFECTIVE



Optimized shipping when empty, collapsing by over 80% in volume, with 10 minutes max assembly to fold out ready for use when required.







**MANUFACTURER**

**WWW.BAN-AIR.COM**

**SALES@BAN-AIR.COM**

**+44 121 401 1122 (EUROPE)**

**+1 919 753 8429 (USA)**